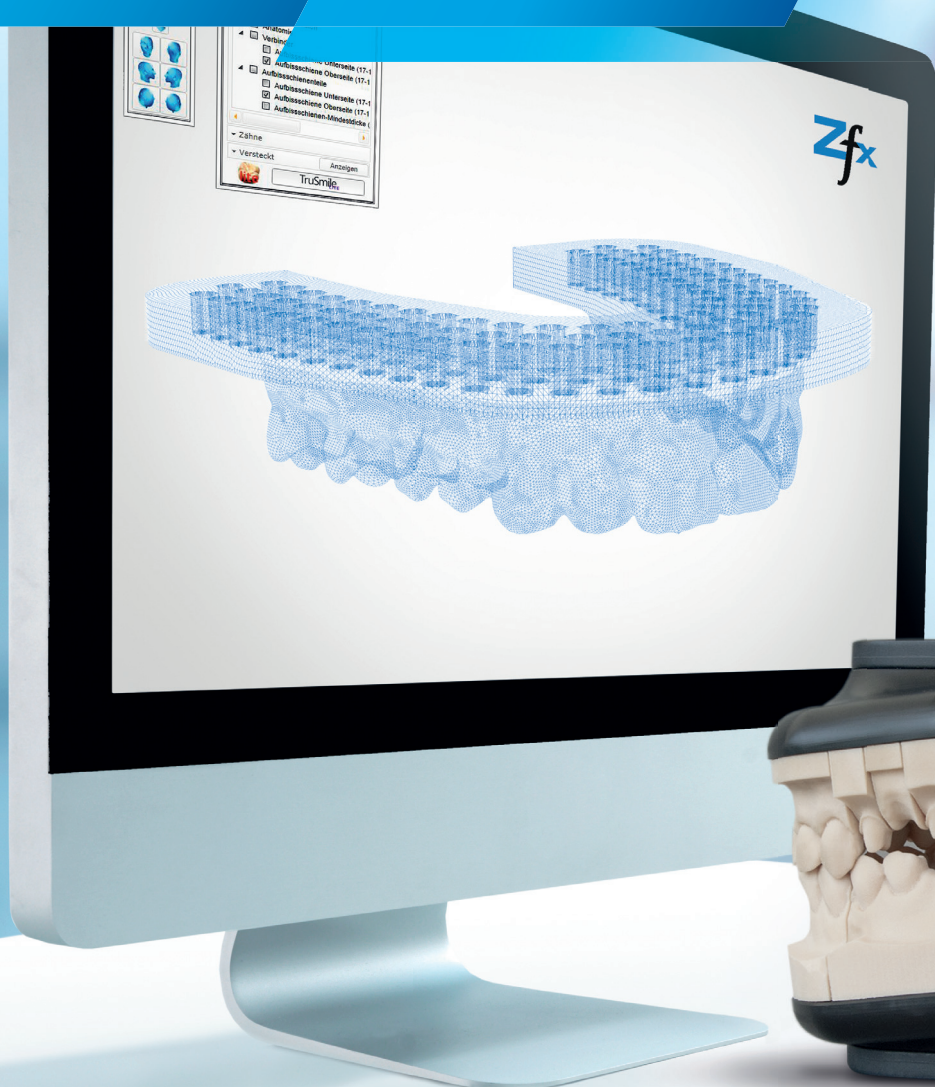




Digital Model fabrication



Zfx™ Digital-intraModel System

Computer-aided fabrication of physical models

Your benefits

- × *Direct visual control options by high-end intraoral scans*
- × *High-precision laser sintering manufacturing*
- × *Highest accuracy of model analogs for all current implant systems*
- × *Patented positioning mechanism: Location of the exact position of the model analog in the model (plug system)*
- × *Protrusion and laterotrusion movements*
- × *Examination is also possible for complex implant-supported bridges*

Well thought-out system for highest precision

Intraoral scanners help to improve the quality of preparations and impressions by providing direct visual control opportunities. High-quality scans are produced, which are serving as basis for computer-aided manufacturing of dental prostheses. The only weak point within the conventional workflow is physical models, which aren't suitable for the control of fit due to its low accuracy. With the specially developed Zfx™ Digital-intraModel System the company is now presenting a solution for this problem.

The system consists of a software module and separately available hardware components – plinths for upper and lower jaws, pins for model fixation on the plates and an intercuspidator. The module 'Digital intraModel System' is used to transfer the digital data set of the impression into a model. Therefore the selection is made for the model type, the scan positioning between the plates, the determination of the preparation borders respectively emergence profile (implant model) and the segmentation.

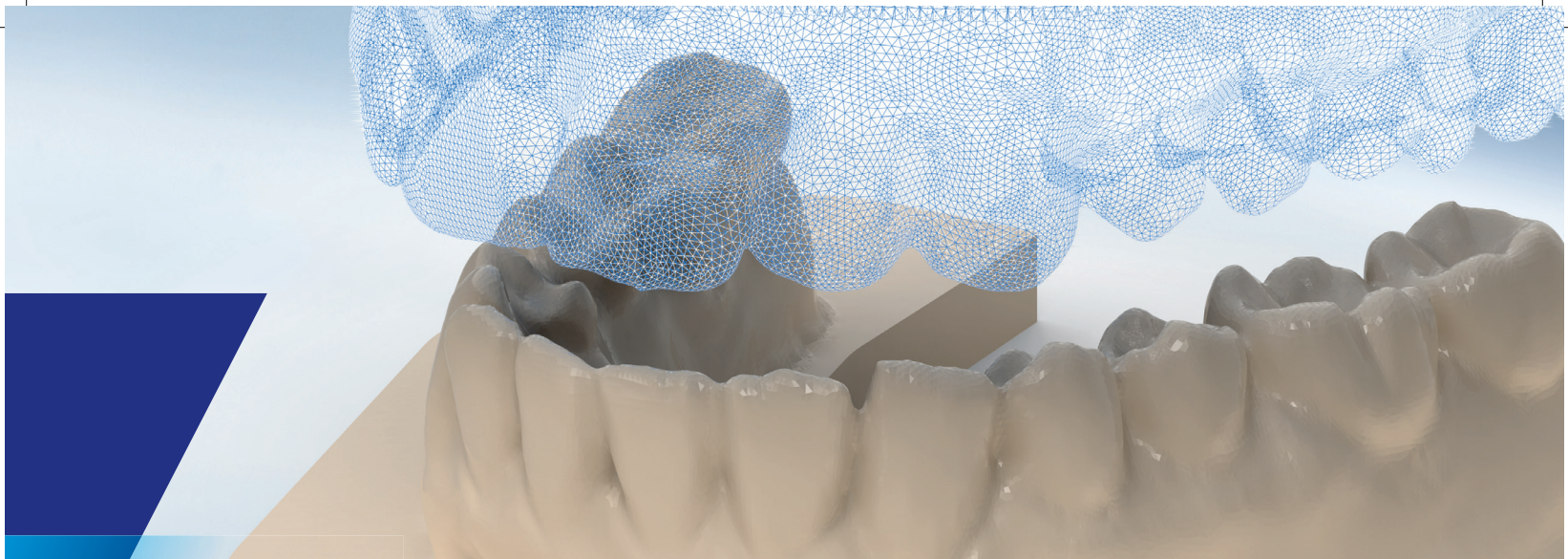
The production

This digital model data is submitted to Zfx, where the production is done via highly precise synthetic laser sintering. It is then delivered to the lab whether it be cement retained models or implant models which would include the suitable model analogs. The analogs have been especially developed by Zfx for ensuring the highest fitting accuracy during the positioning thereof. They are available for all Zimmer Biomet implant types and most other common implant systems. The high accuracy is guaranteed by the patented fixation process via a locating pin, which is guided through printed holes in the model as well as in the analog (plug system). This means that the intended position is exactly transferred from the software; an incorrect positioning is impossible.

The models can be fixed on to plinths and put in the intercuspidator, which is used to carry out protrusion and laterotrusion movements. The system is compatible with an average articulator (e.g. Artex®, Amann Girschbach) and can be implemented easily in it by means of an adapter plate. Tests reveal, that the accuracy of the models is sufficient for even checking the fit of complex screw retained implant-supported bridges.

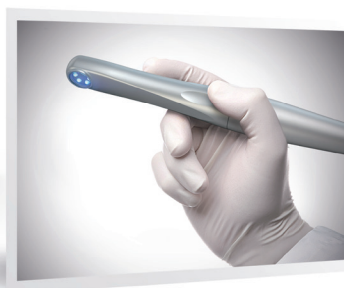


A patented plug system enables the exact positioning of the model analogs.



1. Scanning

The intraoral scanner enables highly precise situation scans. Even the exact position of a BellaTek® Encode® Gingiva-former can be determined (impression posts, scanbody and healing cap at the same time).



2. Designing

With the software upgrade, Digital-intraModel System' the digital data record is transformed into a model. Therefore the selection of the model type, the scanning position between the plates, the determination of the preparation margins, respective emergence profile (implant model) and the segmentation is made.



FROM THE SCAN TO THE PHYSICAL MODEL

4. Exact positioning

The finished models are fixed on the cover plates respectively on the intercuspidator, protrusion and laterotrusion movements can be carried out.

Implant models are delivered including suitable model analogs.



3. Manufacturing

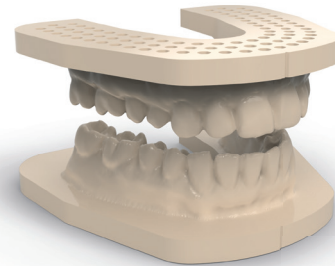
After the data have been submitted to a milling center the manufacturing is carried out by the highly precise synthetic laser sintering procedure.



Zfx™ Models & Drill Guides



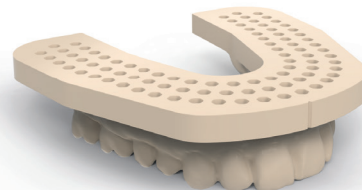
	Part number	Price (£)
Dental model (quarter), UJ incl. Preparation		
Synthetic laser sintering procedure	ZFXLS001	13.00
Dental model (quarter), LJ incl. Preparation		
Synthetic laser sintering procedure	ZFXLS001	13.00



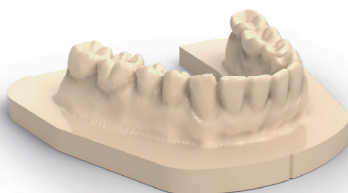
	Part number	Price (£)
Dental model, UJ incl. Preparation		
Synthetic laser sintering procedure	ZFXLS002	25.00
Dental model, LJ incl. Preparation		
Synthetic laser sintering procedure	ZFXLS002	25.00



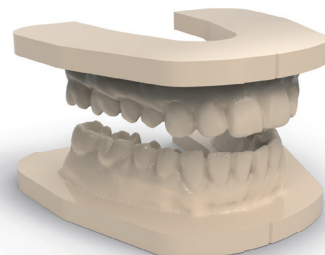
	Part number	Price (£)
Stump / preparation from PU		
Synthetic laser sintering procedure	ZFXLS003	4.90
Milling procedure	ZFXM001	6.90



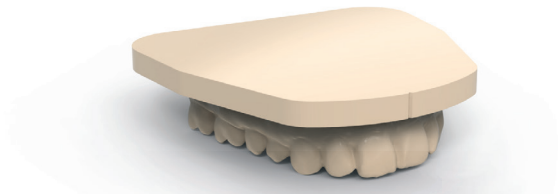
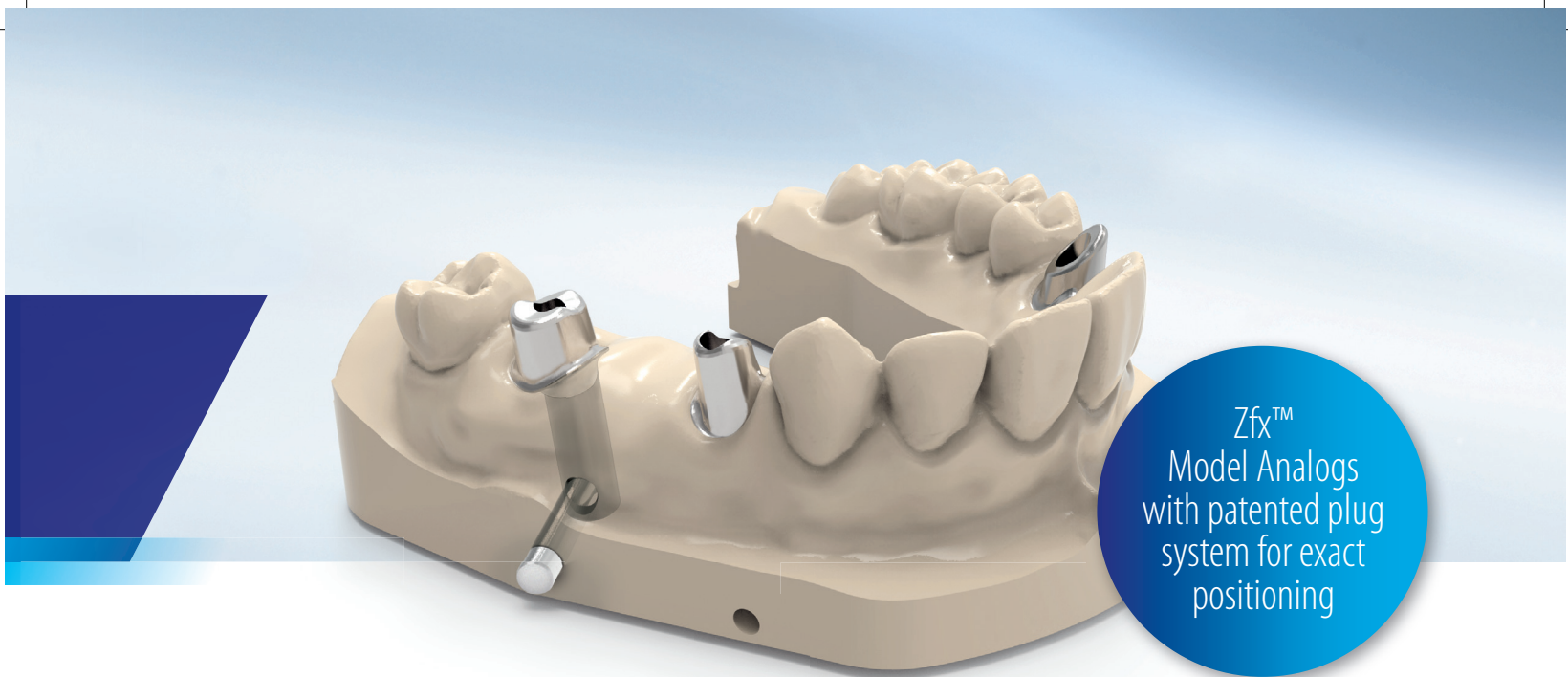
	Part number	Price (£)
KFO model, UJ		
Synthetic laser sintering procedure	ZFXLS002	25.00



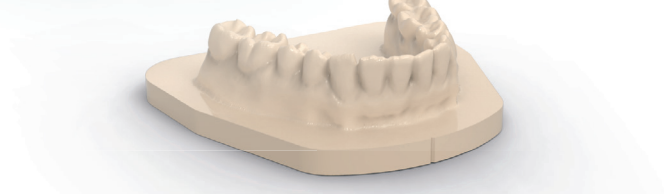
	Part number	Price (£)
KFO model, LJ		
Synthetic laser sintering procedure	ZFXLS002	25.00



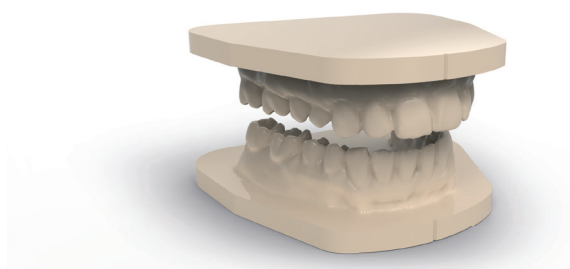
	Part number	Price (£)
KFO model, UJ		
Synthetic laser sintering procedure	ZFXLS002	25.00
KFO model, LJ		
Synthetic laser sintering procedure	ZFXLS002	25.00



	Part number	Price (£)
KFO model with plinth, UJ		
Synthetic laser sintering procedure	ZFXLS002	25.00



	Part number	Price (£)
KFO model with plinth, LJ		
Synthetic laser sintering procedure	ZFXLS002	25.00



	Part number	Price (£)
KFO model with plinth, UJ		
Synthetic laser sintering procedure	ZFXLS002	25.00

KFO model with plinth, LJ		
Synthetic laser sintering procedure	ZFXLS002	25.00



	Part number	Price (£)
Drill template up to 6 elements		
Synthetic laser sintering procedure	ZFXLS004	140.00



	Part number	Price (£)
Drill template, more than 6 elements		
Synthetic laser sintering procedure	ZFXLS005	199.00

Zfx™ Digital-intraModel System Set

Delivery content set

- × 1 piece intercuspidator
- × 2 pieces Zfx™ plates
- × 1 piece check block
- × 30 pieces metal pins
- × 1 piece hexagon key (HXLGR1.25), long with GemLock for Zfx™ IntraScan Matchholder

Article	Part number	Price (£)
Zfx™ Digital-intraModel System Set	ZFX02002065	420.00



Further accessories

	Part number	Price (£)
Software upgrade: Zfx™ Digital-intraModel	ZFX10002335	1,050.00
Torque wrench for Zfx™ Evolution Matchholder	ZFX02002067	79.00
Hexagon key, long for Zfx™ IntraScan Matchholder with torque adaptor, without GemLock	HXL1.25	90.00
Hexagon key, long with GemLock for Zfx™ IntraScan Matchholder with GemLock holding function	HXLGR1.25	100.00
Zfx™ Metal Pin Set (50 pcs.)	ZFX02002524	85.00



Software upgrade: Zfx™
Digital-intraModel System



Torque wrench for
Matchholder of the
Zfx™ Evolution series



Hexagon key,
long for Zfx™ IntraScan
Matchholder with
torque adaptor



Hexagon key,
long with GemLock
for Zfx™ IntraScan
Matchholder



Zfx™ Metal Pin



Model analogs for all
current implant systems



Implant systems and types, compatible with Zfx

Implant manufacturer	Implant Systems				
BIOMET 3I	Certain®	Conical®	IOL®	Low Profile®	ExHex®
BIOHORIZONS	Tapered Internal®				
BREDENT	SKY uni.cone®	SKY fast and fixed®	SKY®		
CAMLOG	Screw Line®	VARIO SR®			
DENTIUM	Superline & Implantium				
DENTSPLY IMPLANTS (ASTRATECH)	EV	OsseoSpeed®	UniAbutment®		
DENTSPLY IMPLANTS	Multi-Purpose®	Frialit-Xive®			
MEGAGEN	AnyOne®	AnyRidge®	EZ Plus®	Rescue Internal®	
MIS	Internal Hex®				
NOBEL BIO CARE	Active®	Brånemark®	Multi-unit®	Replace®	
OSSTEM	GS & TS System®				
P-I	Amplified®	Conical Abutment®	External Hexagon®	Morse Taper®	
STRAUMANN INSTITUT	Bone Level®	Mutli-Base®	SynOcta®	Octa® (External Octagon)	
SWEDEN & MARTINA	Global®	Outlink2®	Premium Kohno®		
THOMMEN MEDICAL	SPI®				
ZIMMER	Tapered Screw Vent®	Shoulder Abutment®	SwissPlus®	Tapered Abutment®	Eztetic Implant®



You can find the current version of the catalogue, including all components, at zfx.dental.com



www.zfx-dental.co.uk

Zfx Birmingham Ltd.

127 Coombs Road, Halesowen
Birmingham, B62 8AF, Great Britain
Tel. +44 121 559 71 72
Mob. +44 77 959 656 27
birmingham@zfx-dental.com